

23-25 February 2024

# *The East Coast in Watercolour*



[WWW.FACT.ORG.UK/WATERCOLOUR](http://WWW.FACT.ORG.UK/WATERCOLOUR)

### Living Landscape

Fellowship Afloat's centre at Tollesbury, Essex, is a unique place for adventure, relaxation and exploring the environment. The combination of sea, sky and salt marsh adds up to a very particular kind of beauty.

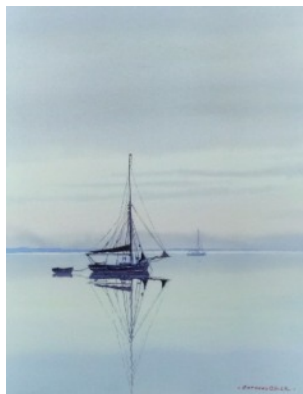
Fellowship Afloat is based on board a converted Trinity House Lightvessel.

*Trinity* is fitted out with centrally heated cabins, modern showers and toilets, well-equipped galley and saloon enjoying panoramic views of the saltings and estuary.



### The programme will include:

- Demonstrations from Tony that will hold you spellbound and give you 'easy to copy' techniques to practice.
- Painting and sketching from the panoramic comfort of *Trinity's* saloon and as weather allows, an opportunity to find a quiet spot amongst the salt marsh and historic boatyard buildings.
- Enjoy the unique vantage of sketching from the Trust's motor launch *Sanderling* in the creeks and fleets of the estuary, to gather material and soak up the atmosphere (weather permitting).
- Informative exercises on many aspects of producing watercolour paintings with a maritime flavour.



Cover picture and art by Tony Osler

### Introducing your tutor: Tony



Tony is a professional marine artist who has enjoyed a long association with Fellowship Afloat, bringing groups of youngsters down to Tollesbury as long ago as 1976. He has been painting the seas, skies and boats of the East Coast for over 50 years and has had many one man shows of his paintings, including in Paris. Tony exhibits at galleries in East Anglia and London and in the past has shown his work in France and the U.S.A. See Tony's website for examples of his work and further information [www.anthon Yoslermarineartist.co.uk/Osler](http://www.anthon Yoslermarineartist.co.uk/Osler)

### Life on *Trinity*

The experience of living together in a community is one of the most important aspects of your stay on board. As Christians we welcome the opportunity of sharing our faith. Feel free to join us in the Christian life of the centre.

Arrive 17.00 Friday

Evening Meal

Depart 16.00 Sunday

Cost: Full board £199.00 (inc. VAT)

### Fellowship Afloat Staff & Responsibilities

During your stay, you will be looked after by both permanent staff and sessional volunteers, all of whom are trained and familiar with life on board and the various specialist activities. Appropriate personal checks, which include a DBS disclosure, are made on all new staff. Fellowship Afloat staff take full responsibility for the organisation of domestic arrangements and activities. The highest priority is given to the safety and comfort of visitors.

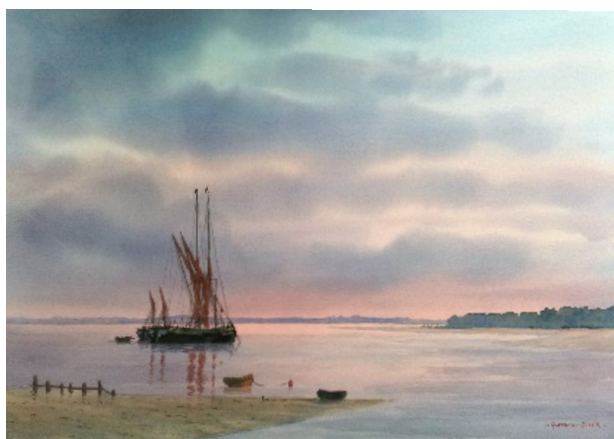
### What to bring:

- A wooden drawing board
- Good quality watercolour paper, at least 90lb weight - 140lb is much better
- A small sketch-book
- 2B + 6B pencils, eraser
- A water container
- Brown paper sticky tape (not masking tape)
- A selection of brushes - a 1" Hake for covering large areas with water or paint, No 5 round and a No 1 for fine detail
- A craft knife
- A hairdryer if you have one
- Watercolours (buy the very best you can afford, preferably 'Artists' quality)

Light Red	Antwerp Blue
Cadmium Red	Ultramarine Blue
Alizarin Crimson	Oxide of Chromium
Neutral tint	(Sometimes called
Paynes Grey	Chrome Green)
Naples Yellow	

These are the colours that Tony most uses - many people accumulate their own favourites over the years. If your kit is totally different to that given above, no matter, bring it along just the same! - we all learn from each other.

Tony will bring some good quality paper for sale and a selection of art books for study and enjoyment during the weekend.



### Arrival and Welcome

On arrival we will meet you in our car park and assist you with your luggage for the five-minute walk to *Trinity*. If you require assistance, please call the centre on 01621 869779. After settling everyone in, we will have some introductions and talk through the rules of the centre and safety aspects.

### Practical Matters

Bring your luggage in a soft bag.

For the time we spend on the water, be prepared with:

- plenty of warm clothes
- tracksuit trousers or leggings (not jeans)
- a woolly hat or cap
- gloves
- soft soled shoes e.g. trainers.

Protection against the sun when you are on the water is important: sunglasses are recommended, sun cream is essential.

Footwear for the weekend requires thought too - you'll need one pair of outside shoes and wellies if possible (we have some wellies onboard catering for most sizes up to size 8) and trainers or light shoes for use onboard.

Foam pillows and pillowcases are provided for each individual. You will need to bring a sleeping bag; if you don't own one, we have spares that can be hired at £3.00 for the weekend.

Waterproofs and buoyancy aids are available for all visitors at no extra cost.

### Holiday insurance

Fellowship Afloat is covered by public liability insurance which indemnifies the Trust in the event of an accident or loss resulting from negligence on its part. Cancellation costs, personal accidents and property loss for visitors are not covered, so we advise you to make your own arrangements if insurance is required.

Visitors are advised that they are not permitted to publish or make available to the public, images in any format, whether static or moving of the staff or volunteers of the Trust; or any organised activities, unless express permission has been granted in writing. Permission can be obtained by emailing [info@fact.org.uk](mailto:info@fact.org.uk)

### Want to find out more?

Contact the office at:  
Fellowship Afloat Charitable Trust,  
The Sail Lofts, Woodrolfe Road, Tollesbury,  
Maldon, Essex. CM9 8SE

Telephone office: 01621 868113  
centre: 01621 869779

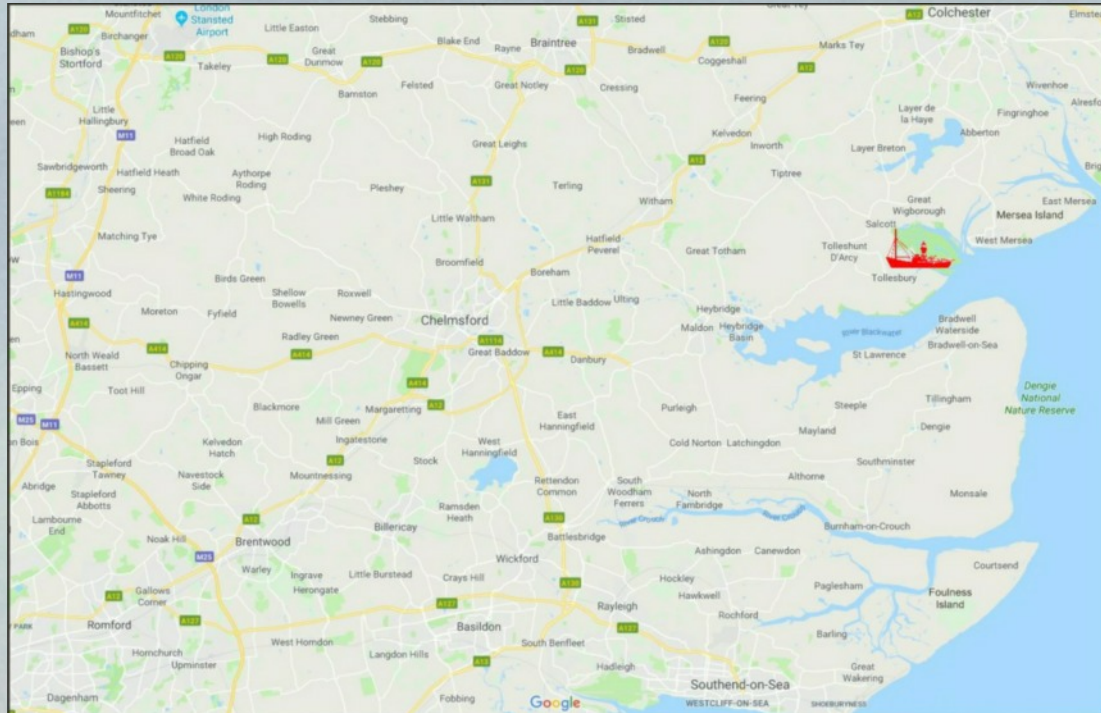
Email: [info@fact.org.uk](mailto:info@fact.org.uk)  
Website: [www.fact.org.uk](http://www.fact.org.uk).



## WHERE TO FIND

Tollesbury is in Essex, England, on the north coast of the River Blackwater, south of Colchester and east of Maldon. Tollesbury is at the south end of the B1023, which can be accessed from the A12 (London to Colchester road) at Kelvedon, Essex. The nearest railway station is 10 miles away at Witham, about 45 minutes journey time from London Liverpool Street, and there's a bus service from Witham to Tollesbury.

*Please check public transport before travelling*



The Sail Lofts, Woodrolfe Road, Tollesbury, Maldon, Essex. CM9 8SE  
Telephone office: 01621 868113 centre: 01621 869779 Email: [info@fact.org.uk](mailto:info@fact.org.uk) Website: [www.fact.org.uk](http://www.fact.org.uk)  
Company No. 3264887 Charity No. 1059143